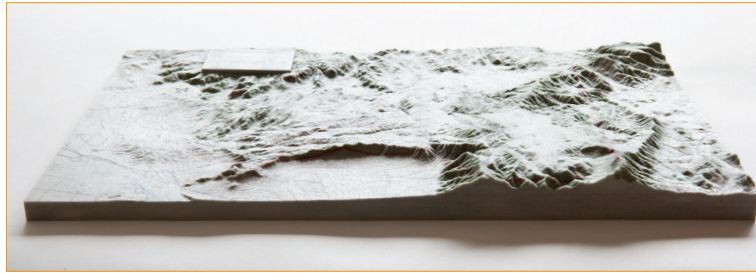


# Set your cellar door apart with a 3D map

Our full-colour terrain maps tell the tale of your terroir.

ONE COPY  
OR MANY?



HUGE OR  
PORTABLE?

## Large, full-colour Terrain Map/Model

- as large as 1.2 x 2.4 metres, this will make a huge impression
- easy to wipe clean – even red wine spills are not a problem
- very high resolution, suitable for aerial photos
- show the region's outline, subregions, your vineyards, roads, towns, rivers and lakes, prevailing winds, elevations, you name it!
- from about \$5000



Terrain map/model of Napa Valley, California

## 3D-printed Terrain Map/Model

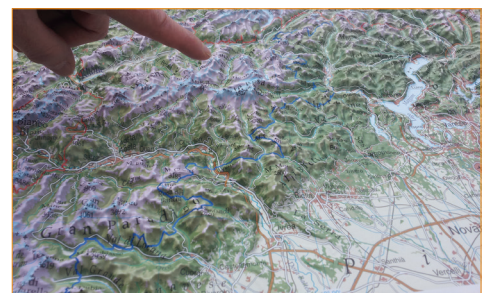
Our “Terroir Explainer” for Ten Minutes by Tractor was a finalist in the 2016 Victoria Premier’s Design Awards.



- looks great on the tasting bench
- sturdy enough to put in the suitcase for sales calls overseas
- fully customisable to show the cities, towns, vineyards and so on in the language of your choosing
- digitally designed, easily reproduced
- printed in Victoria
- from about \$2000

## Plastic Raised-Relief Maps

- digitally print multiple quantities on PVC material, a sturdy plastic
- a memorable souvenir for enthusiastic visitors and V.I.P.s
- a useful selling aide for sales and marketing team members
- from about \$50 per map for 300 copies at 60 x 40cm



Europe map printed by our raised-relief partners

## Printed Maps

Talk to us about paper maps, too. We can map geology, soil, vineyards, weather—whatever best tells your story!



vW Maps Pty Ltd

3 Younger Court  
Kew, Victoria 3101  
Australia

mvw@vwmaps.com  
+61(0)424 127 492

[www.vwmaps.com](http://www.vwmaps.com)

## About vW Maps

vW Maps has been a trusted resource for the Australian wine industry since 2007. You may be familiar with the wine maps of Australia, Victoria, and Tasmania we have published with noted wine writers Max Allen and Graeme Phillips. Among our custom cartography clients are National Geographic and Australian Geographic; Wine Australia, wine region associations, wineries and wine brands across Australia and New Zealand; publishers Penguin and Melbourne University Publishing, real estate companies Elders and CBRE; and local governments.

